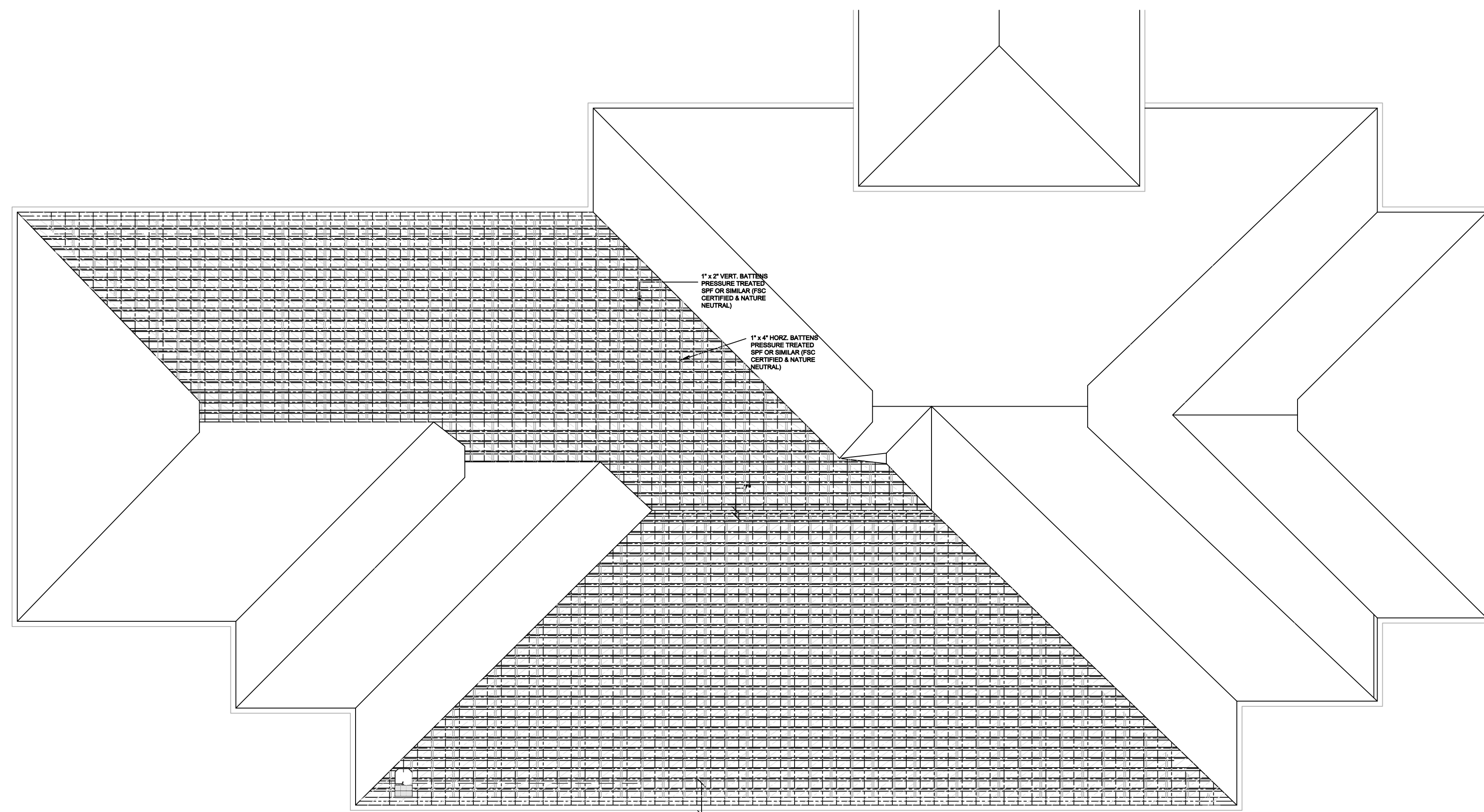


# ROOF PLAN

## ATLANTIS ENERGY SUNSLATE ROOF TILE DEAD LOAD CALCULATIONS

TILE WEIGHT: 14.4 LBS.  
 LENGTH: 33.25"  
 REVEAL: 19.625"  
 AREA = 33.25" (19.6") / 144 = 4.53 FT<sup>2</sup>  
 DEAD LOAD = 14.4 LBS / 4.53 FT<sup>2</sup> = 3.18 psf

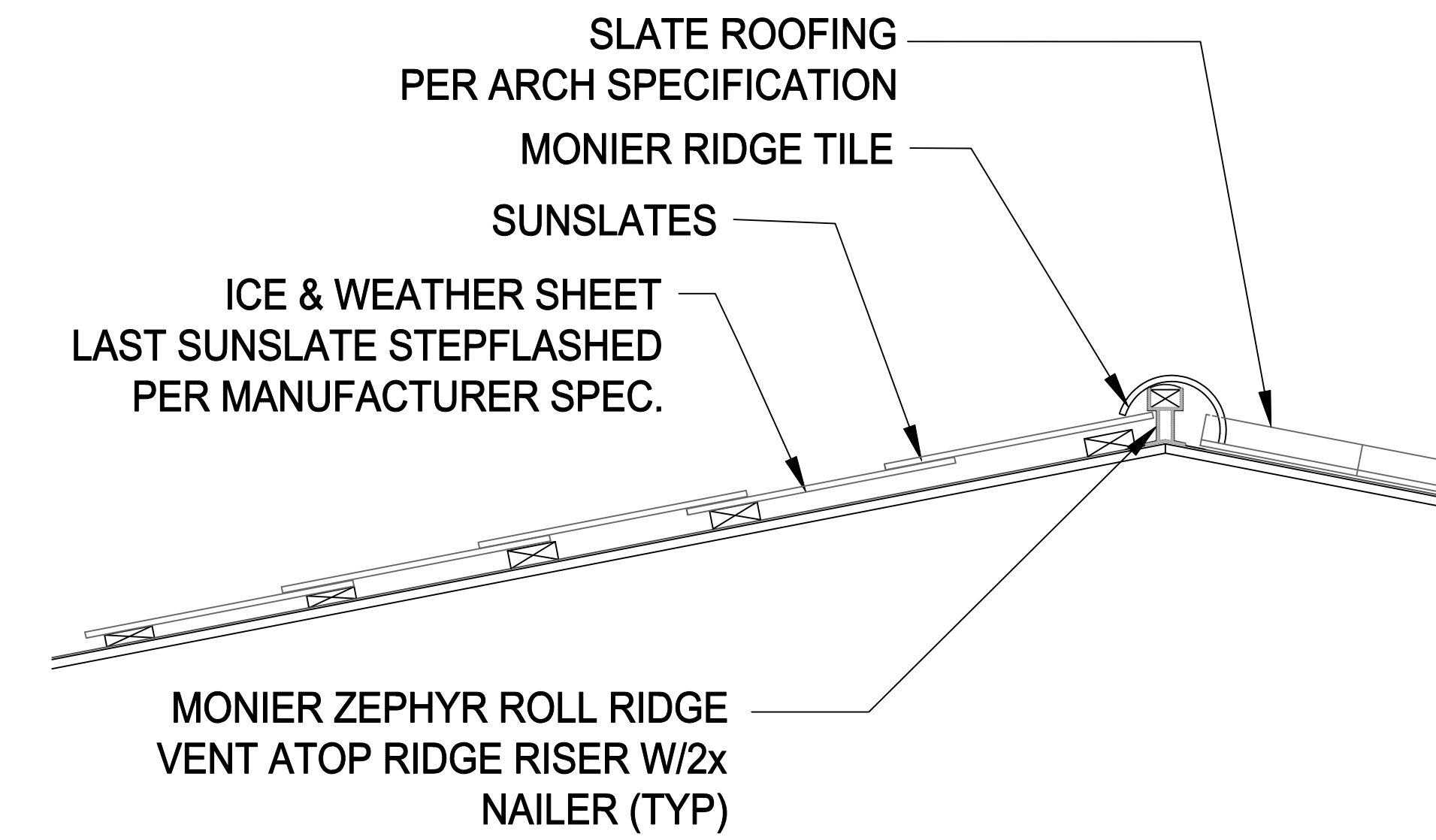


# LATTICE LAYOUT

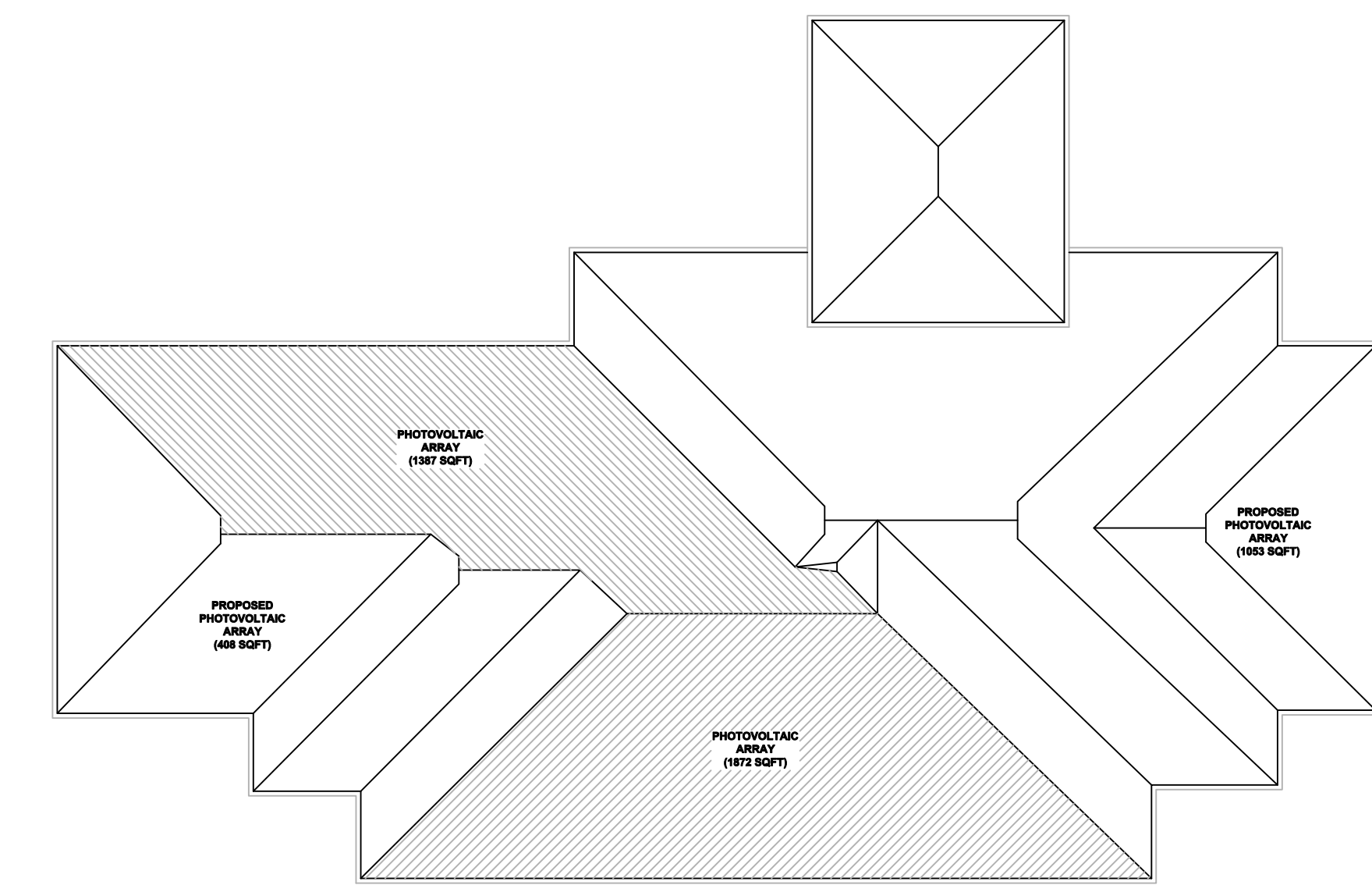
The data in these construction documents are the one time property of Atlantis Energy Systems, Inc. and incorporates the intellectual & proprietary rights of Atlantis Energy. Any party accepting these documents do so in confidence and agrees that it shall not be duplicated in whole or in part nor disclosed to others without the consent of Atlantis Energy Systems, Inc.

## ATLANTIS ENERGY SUNSLATE ROOF TILE SOLAR ELECTRIC POWER PRODUCTION CALCULATIONS

TOTAL AREA: 3,259 SQFT.  
 TILE AREA: 1.98 SQFT.  
 TILE QUANTITY: 1646  
 POWER/TILE: 19 Wp  
 POWER = 1646 x 19W = 31,274Wp dc or 31.27kWp dc  
 10.2kW AC @ EAST / 13.8Kw AC @ WEST  
 EST. STRINGS = 13 @ 125 TILES/STRING  
 INVERTER TYPE:  
 SEE PV1.1 FOR SPECIFICATIONS



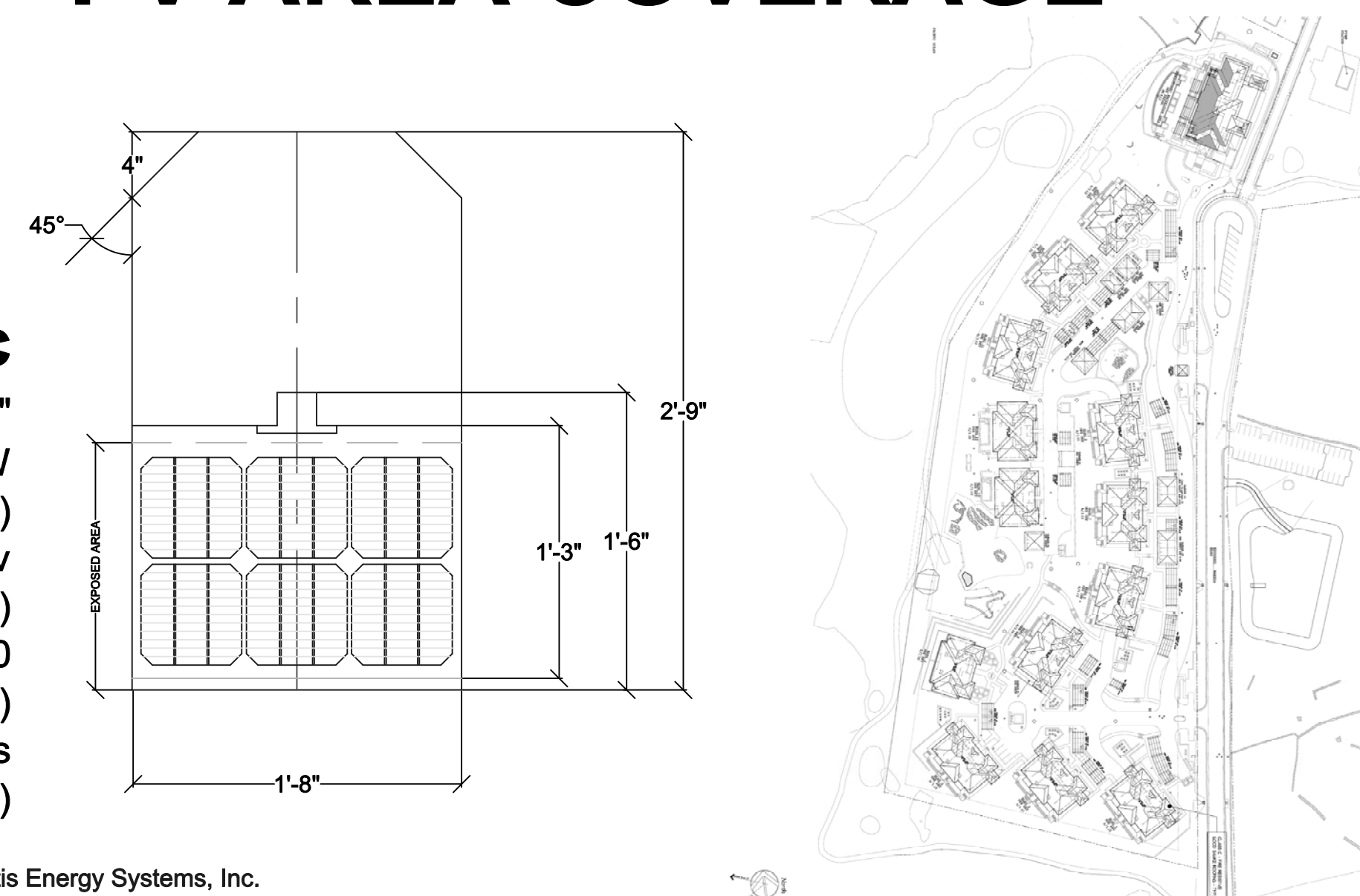
## DETAILED SECTION



## PV AREA COVERAGE

### SUNSLATE SPEC

CELL MODEL = Q CELL-6"  
 P MAX = M19.1W (@MAX POWER PT)  
 V MAX = 2.97v (@MAX POWER PT)  
 VOC = 3.70 (OPEN CIRCUIT VOLTAGE)  
 I MAX = 7.62 Amps (@MAX POWER PT)



BEACHSIDE ROOFING & COMMERCIAL SERVICES  
 2464 Kula Kōlea Dr.  
 Honolulu, Hawaii 96819  
 (808) 941-0714



# Maluaka Parcel H - 1

At Maluaka, Island of Maui

HOMEOWNERS' RECREATION CENTER - DETAIL  
 PHOTOVOLTAIC ROOF PLAN

REVISIONS:

BUILDING PERMIT SET  
 BID SET - APRIL 16, 2007

PV - 1.0

SHEET OF

PROJECT NO. 2005-0161

DATE: 12-DECEMBER-2007